

8

7

6

5

4

3

1

BOM FOR ASSEMBLY 25400			BOM FOR ASSEMBLY 25400		
COMPONENT	DESCRIPTION	QTY	COMPONENT	DESCRIPTION	QTY
13547	WASHER,#10, INTERNAL TOOTH LOCK	1	25644	WASHER,SS, 1.01 ID X 1.565 OD	1
13584	CABLE, ALTERNATOR, 3300CE/3900RC	1	25650	ASSY., COVER, RIGHT, 3800	1
18072	RIVET, PERM.	7	25655	ASSY., COVER, LEFT, 3800	1
20205	ALTERNATOR	1	25656	GROMMET	1
20206	SNAPRING,OD1.125,ID.906	1	25701	WASHER, SHOULDER, 10SC312025	1
21146	GROMMET, GRO-I-UL	1	25814	FLYWHEEL, 3400, 3800	1
21204	ASSY, DIODE	1	25816	1/2" CRANK, 181Q	1
21445	ASSY,SPEED SENSOR,CLIMBING SYS,CL	1	27999	SCREW, SOC HD CAP, .375-16UNC X 1.0	1
21509	WASHER, THRUST	4	28385	ENDCAP, RND, 1.25 OD, BLK	1
22023	NUT, #10-24, NYLON INSERT	1	28454	NUT, .375-16, CENTER LOCK	3
22027	WASHER, .250 SPLIT LOCK	4			
22030	WASHER, 3/8 USS FLAT	7			
22032	NUT, 5/16-18 NC NYLON INSERT HEX	3			
22038	WASHER, .250 USS FLAT	2			
22093	SCREW, 5/16-18 X .75, HEX HD CAP	2			
22138	WASHER, .250 INTERNAL LOCK	4			
22142	WASHER,FLAT, OD.63,ID.39	1			
22162	SCREW, .250-20 X .75, HEX HD CAP	2			
22191	WASHER, SHOULDER, .38	2			
22246	SCREW, .375-16 X 1.00, HEX HD CAP	3			
22516	BRACKET, SPEED SENSOR, 4400 CL	1			
22517	DISK, SPEED, SENSOR,4400 CL	1			
23791	TAPE, SAFETY WALK, 1 IN. WIDE, BLK	1			
24056	BEARING, BALL 26MM X 47MM	2			
24073	NUT, JAM, BOTTOM BRACKET	2			
24083	SHIELD, CRANK, LEFT	1			
24086	ASSY, BEARING NUT, RH	1			
24087	ASSY, BEARING NUT, LH	1			
24475	COVER, SEAT TRACK, 3600 RC	1			
24492	PIN, ADJUSTMENT, SEAT, 3600 RC	1			
24511	SCREW, #10-32 X .50, FLAT HD, PHIL	1			
24516	SCREW, 5/16-18NC X 2.75, HEX HD	3			
24550	DECAL,SEAT,NOTCH,3600RC	1			
24551	WASHER, FLAT, NYLON, .409 ID	2			
24640	SCREW, 3/8-16 X 1.75, HEX HD CAP	1			
25401	WELDMENT, FRAME	1			
25411	SCREW, SOC HD CAP, .250-20UNC X 1.25	2			
25418	TRACK, SEAT, EXTRUSION, 3600 RC	1			
25419	DECAL, 3800	2			
25422	RUBBER, SPACER	1			
25423	PEDAL, SCHWINN EXTRA WIDE	1			
25427	EYE BOLT, #8-32	1			
25436	ASSY,SEAT,RECUMBENT	1			
25454	SCREW, .25-20 X .75, HEX	4			
25471	CABLE, CONSOLE TO INLINE CONNECTOR	1			
25473	CABLE,CONSOLE TO PCBA	1			
25475	GROMMET, .125 THK .437 O.D., .250 WIDTH	1			
25532	NUT, .#8-32, HEX ACORN, BLACK	2			
25533	WASHER, #8 SAE FLAT	4			
25534	SCREW,8-32NC X .62 PHIL HD	2			
25603	ASSY. SMALL HTD, BIKE	1			
25605	ASSY, PULLEY, 6.23 IN, CLUTCH	1			
25608	BRACKET, RESISTOR, HANGAR	1			
25611	ASSEMBLY, RESISTOR,	1			
25616	ASSY, POWER BOARD	1			
25620	BELT, HTD, 1400 MM PICTH LENGTH	1			
25621	BELT, POLY-V, 28 IN PITCH LENGTH	1			
25622	ASSEMBLY, IDLER	1			
25626	ASSY, PULLEY	1			
25637	EYE BOLT, #10 X 2	1			

NOTES:

1.➤LUBRICATE WITH LUBRISOL GREASE SMALL HTD ASSEMBLY SHAFT (25603)

2.➤CENTER POLY-V BELT (25621) ON FLYWHEEL (25814), CENTER HTD BELT ON PULLEY (25601) AND HUB (25603).

3.➤PLACE FIELD DIODE ASSEMBLY (21204) BETWEEN FIELD AND GROUND TERMINALS ON ALTERNATOR (22661).

4.➤LOCTITE #242 SCREWS IN PLACE.

5.➤TORQUE TO 40 IN. LB.

6.➤MODEL LEVEL ITEM, REFERENCE MODEL LEVEL BOMS.

REVISIONS			
REV	DESCRIPTION	DATE	DRAFTER
A	RELEASED FOR PRODUCTION PER ECO #7189	4/26/01	RH
B	REVISED PER ECO #8004	4/30/01	RH
C	REVISED PER ECO #8072	7/9/01	RH
D	REVISED PER ECO #8084	7/18/01	RH
E	REVISED PER ECO #8101	8/20/01	RH
F	REVISED PER ECO #8116	9/10/01	RH
G	REVISED PER ECO #8141	10/23/01	KF
H	REVISED PER ECO #8167	10/30/01	RH
J	REVISED PER ECO #8184	10/31/01	RH
K	REVISED PER ECO #8197	11/12/01	RH
L	REVISED PER ECO #8239	12/8/01	RH
M	REVISED PER ECO #8318	3/21/02	KF
N	REVISED PER ECO #8355	6/4/02	RH
P	REVISED PER ECO #8388	8/22/02	RH
R	REVISED PER ECO #8426	10/23/02	RH
S	REVISED PER ECO #8509	1/28/03	RH

8

7

6

5

4

3

1

FINISH CHART		
P/N	DASH #	FINISH
25400	-00	N/A
	-01	WHITE POWDERCOAT
	-02	TEXTURED BLACK POWDERCOAT
	-03	WRINKLE BLACK POWDERCOAT
	-04	GLOSS BLACK POWDERCOAT
	-05	OUTSIDE PROCESS, SEE NOTES
*SUFFIX DETERMINED BY P/N #25401		

TOLERANCES		UNLESS OTHERWISE SPECIFIED: 1. DO NOT SCALE DRAWING 2. ALL DIMENSIONS ARE IN INCHES 3. ALL DIMENSIONS APPLY BEFORE PLATING OR COATING 4. REMOVE ALL BURRS BREAK SHARP EDGES .020 MAX ALL MACHINED SURFACES 125 ✓ 5. ALL VIEWS 3RD ANGLE PROJECTION	PROD/PUR MGR.		
.X ±.1	ANGLES: BENT ±2° MACHINED ±0°30'		MFG. ENGR.		
.XX ±.03			DSGN. ENGR.		
.XXX ±.010			ENGRG. MGR.		
CONFIDENTIAL & PROPRIETARY THIS DOCUMENT IS THE PROPERTY OF STAIRMASTER SPORTS/MEDICAL PRODUCTS, INC. IT MAY NOT BE REPRODUCED IN WHOLE OR IN PART, PROVIDED TO THIRD PARTIES, OR USED FOR ANY PURPOSE OTHER THAN THE PERFORMANCE OF WORK FOR STAIRMASTER, WITHOUT WRITTEN AUTHORIZATION. ALL RIGHTS ARE RESERVED INCLUDING COPYRIGHTS.			MATERIAL SEE CHART		
			FINISH N/A	SIZE D	RELEASED FOR PRODUCTION ECO #7189
				DWG NO:	25400
				VER.	REV.
				SCALE: 0.250	PLOT DATE: 1/28/03
				SHEET 1	OF 5

PRO/ENGINEER GENERATED DRAWING
FILE NAME:25400.DRW

8

7

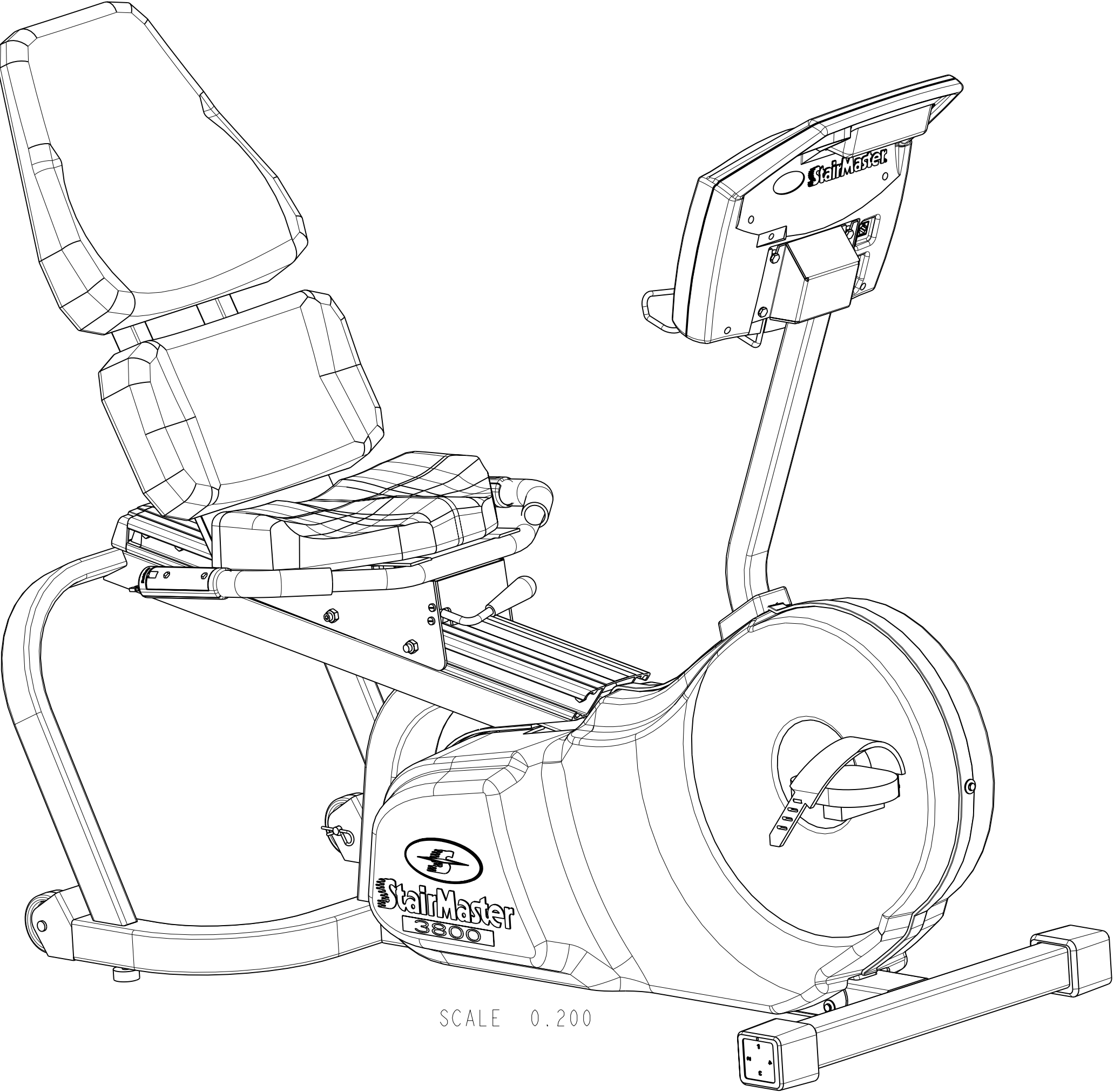
6

5

4

3

1



SCALE 0.200

8

7

6

5

4

3

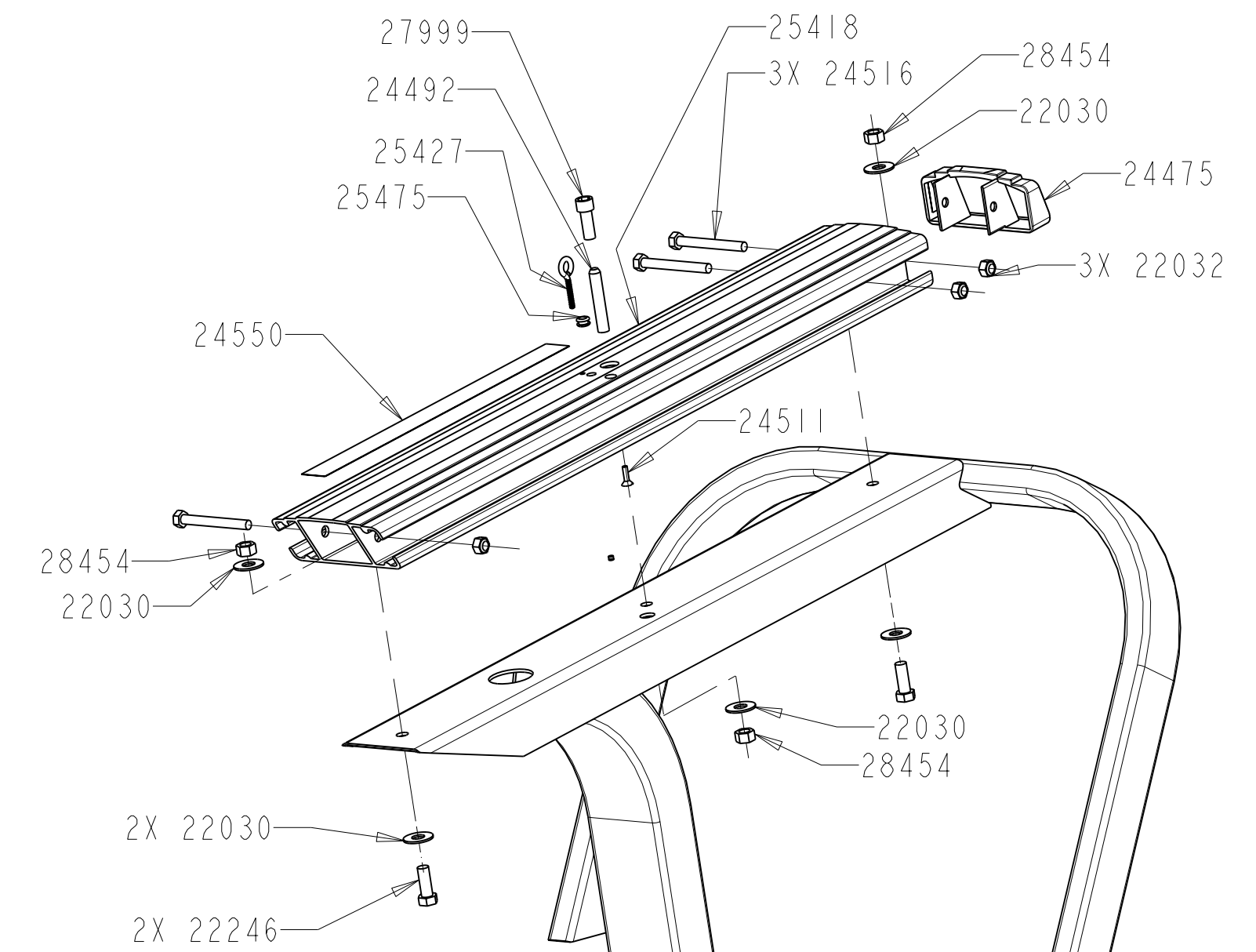
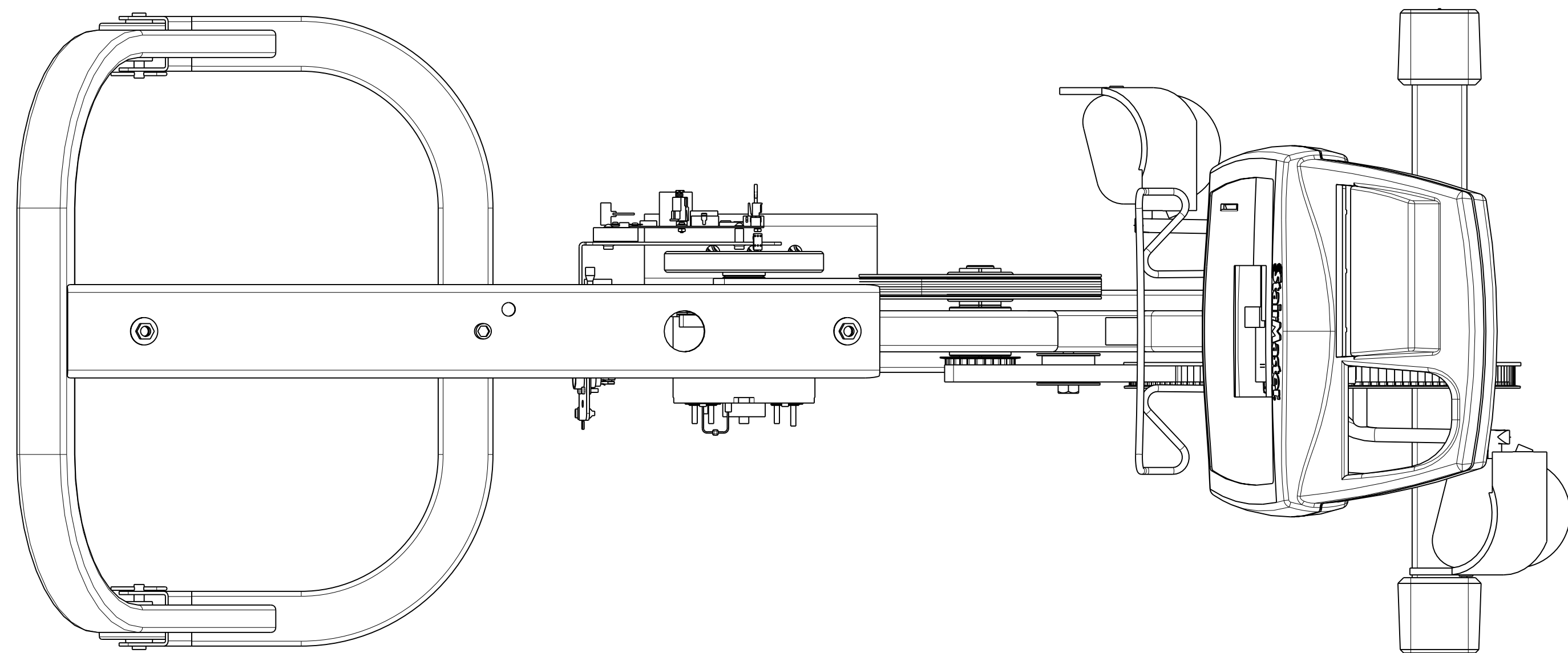
1

StairMaster

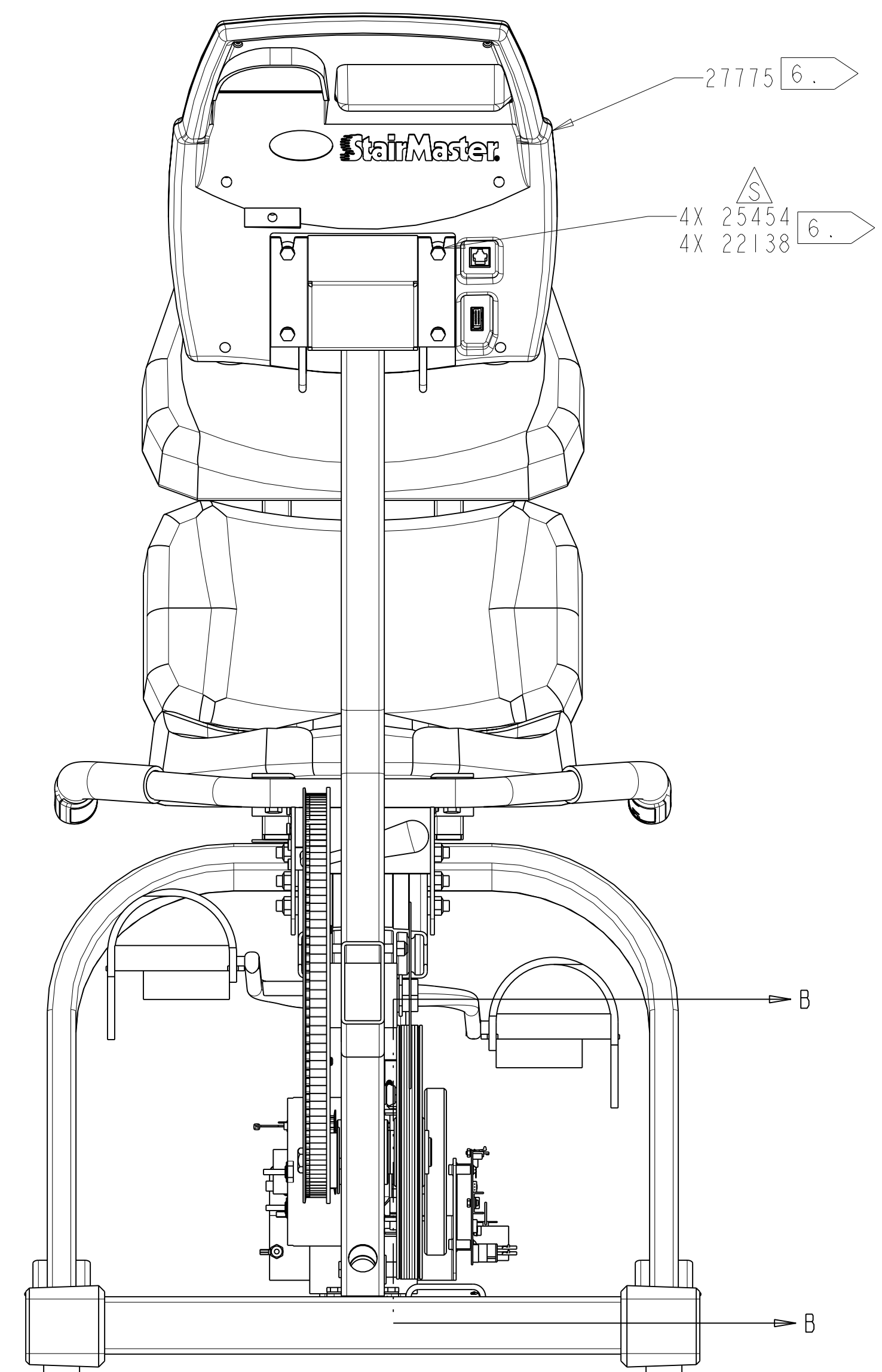
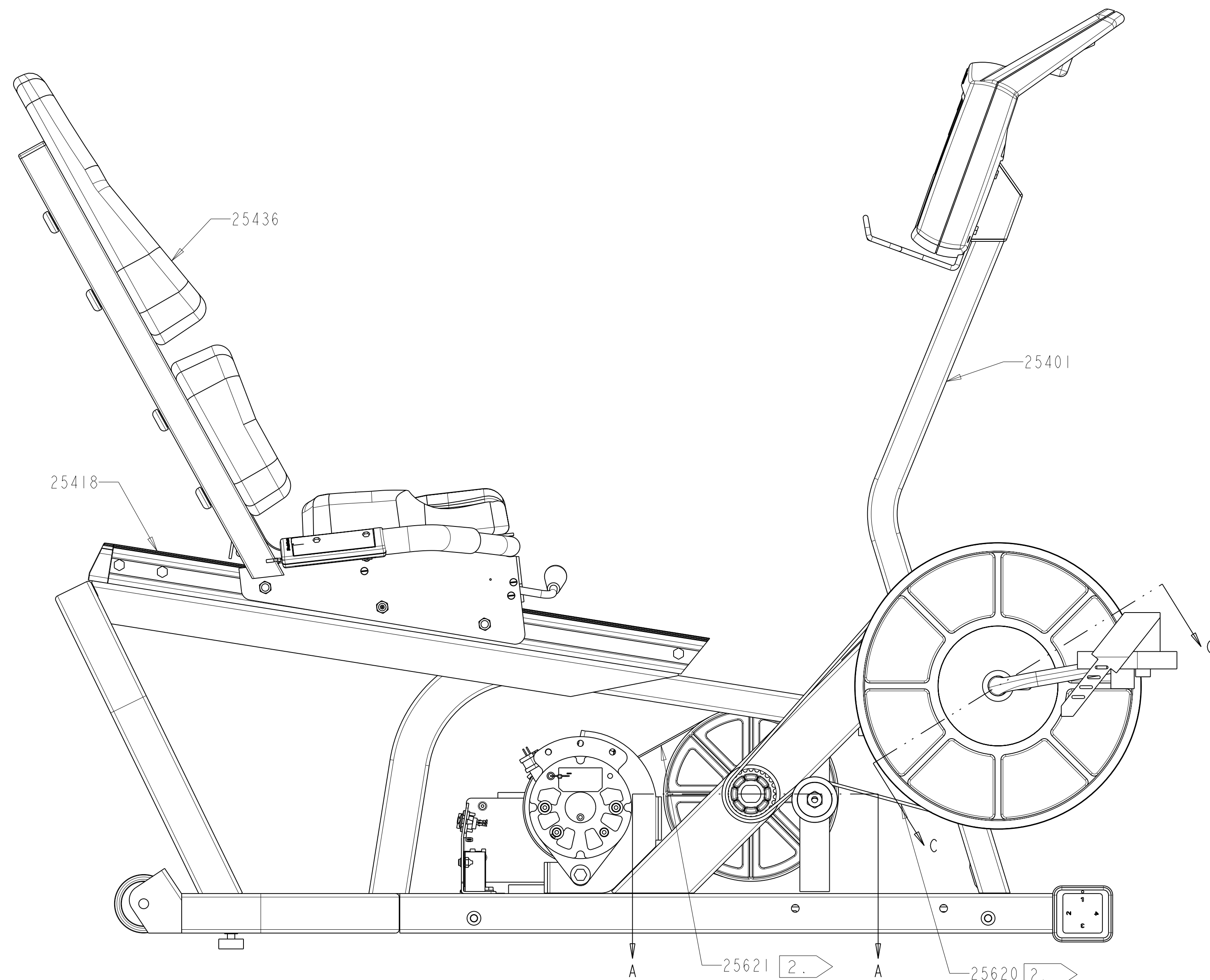
HEALTH & FITNESS PRODUCTS, INC.

ASSEMBLY, FINAL, 3800

PRO/ENGINEER GENERATED DRAWING
FILE NAME:25400.DRW



SCALE 0.200



D

C

B

A

D

C

B

A

